

# My Trip Abroad — 1929

Ollie Lillian Fittingham



Scotland - England - Holland - Belgium - France -  
Italy - The Italian Riviera - Switzerland

June 23<sup>rd</sup> 1929

Cowan -

Chattanooga -

Atlanta Georgia

Philadelphia Penn. - Atlantic City

New York

Wenonah New Jersey

Montreal Canada

Quebec

Glasgow Scotland - came by Belfast Ireland

Edinburgh "

London England - Shakespeare Country - Shottery

Ostend Belgium

Ghent "

Bruges "

Brussels " - Waterloo

Sluis Holland

Paris France - Versailles

Geneva Switzerland

Montreux Switzerland - Chillon Castle

Interlaken Switzerland - Grindenwald Glacier - Jungfrau

Lucerne "

Venice Italy

Florence "

Rome "

Milan "

Nice "

Genoa "

Pisa "

Monte Carlo

Marsailles France

Cherbourg France

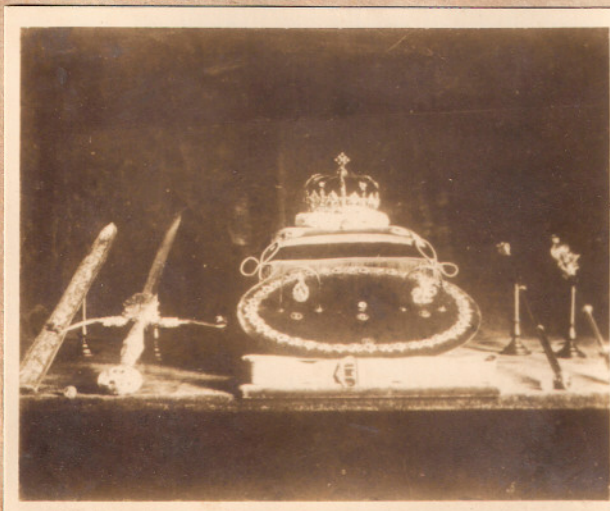
Home

# Edinburgh Castle

~~Edinburgh~~ Scotland



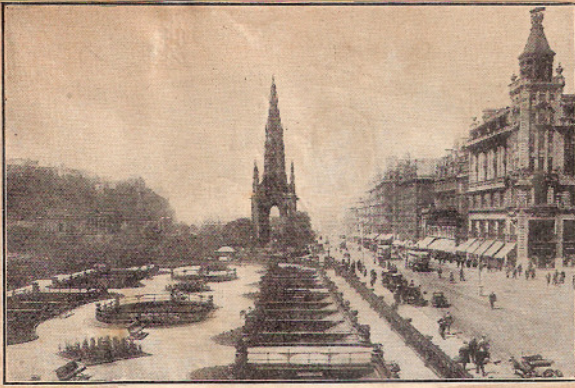
Banqueting Hall



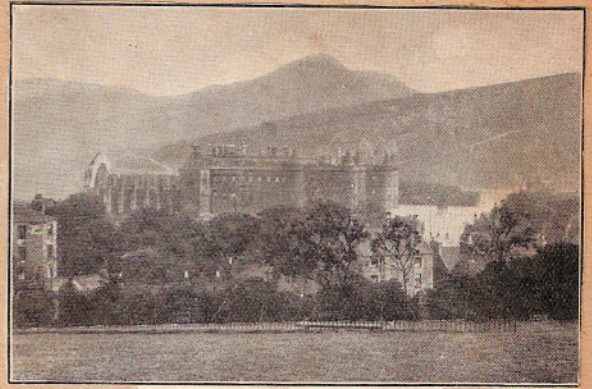
The Regalia of Scotland



St. Margaret's Chapel  
oldest Building Over 800 years old.



EDINBURGH—SCOTT MONUMENT



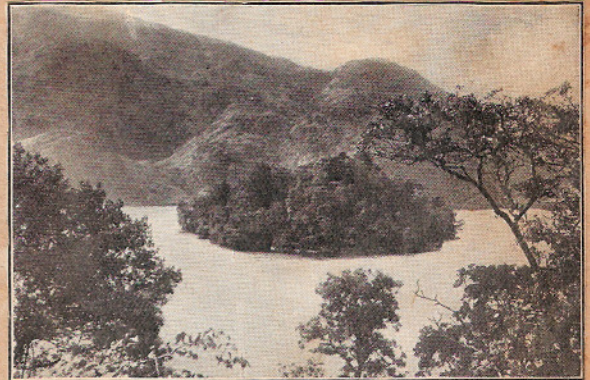
HOLYROOD PALACE, EDINBURGH

Sir Walter Scott, Scotland's greatest novelist, and Edinburgh's most gifted son, showed his great love for the city in that well-known line from "Marmion."

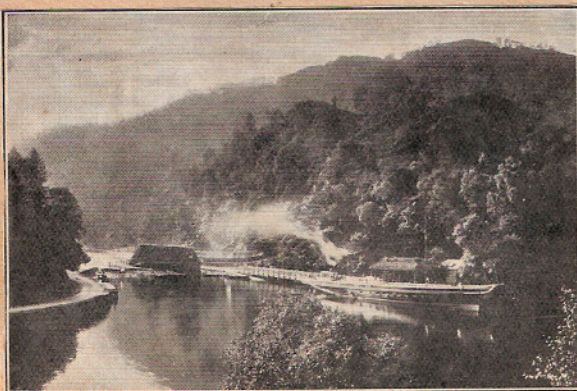
"Mine own Romantic Town."



GLASGOW—GEORGE SQUARE



ELLEN'S ISLE—LOCH KATRINE



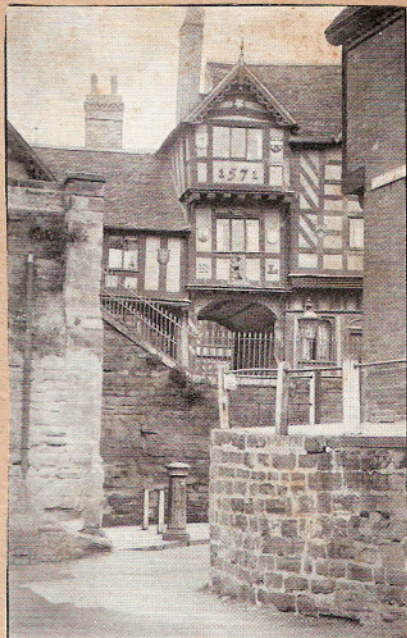
LOCH KATRINE PIER



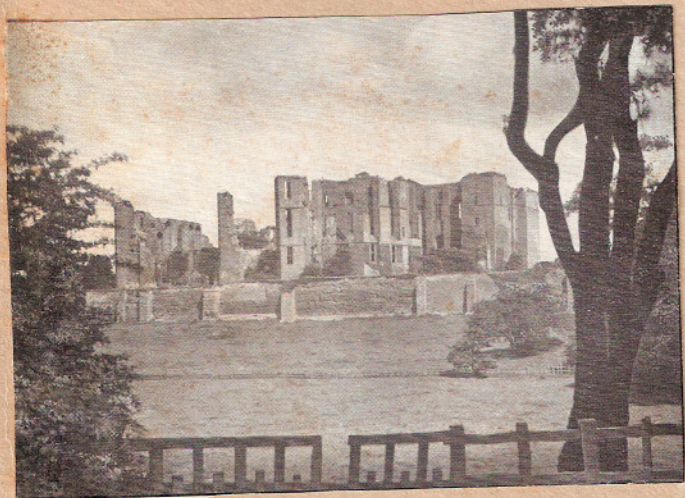
Stirling Castle



Guy's Cliffe Mill. The oldest mill in the world. 1066



Lord Leycester Hospital  
Warwick



Kenilworth Castle.

Caeson's  
Tower  
Warwick  
Castle



Entrance to Jephson Gardens. Leamington Spa



*Shakespeare's House, Stratford-upon-Avon*



*Anne Hathaway's Cottage, near Stratford-upon-Avon*



*Windsor Castle—Where the King lives.*



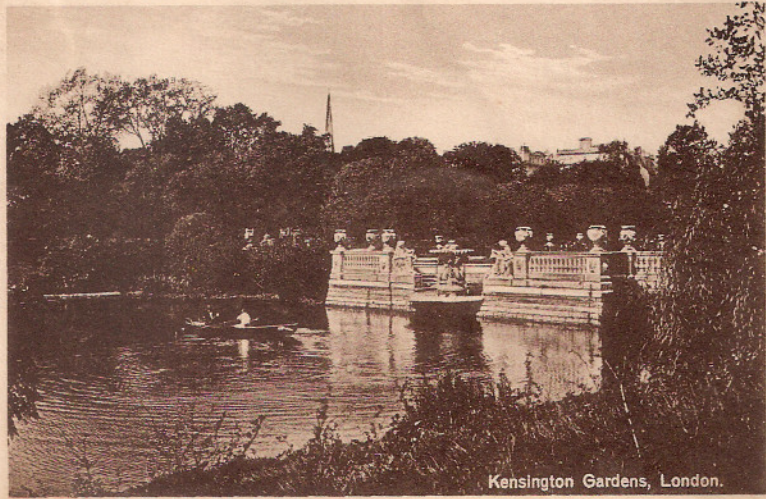
*Winchester Cathedral*

England



National Gallery and Trafalgar Square, London.

Trafalgar Square  
- so named in  
memory of the  
Naval Victory  
of Trafalgar,  
and Nelson's  
Monument  
145 ft high -  
finest square  
in London -



Kensington Gardens, London.



The Houses of Parliament, London.

Parliament  
Houses -  
Gothic style -  
covered & across



England



Westminster Abbey, London.

Westminster Abbey -  
Founded by Edward the Confessor in 1042  
Every monarch since and including William the Conqueror has been crowned in the Abbey -  
The Coronation Chair is the most famous chair in the world's history.  
The Abbey is also the tomb of all the

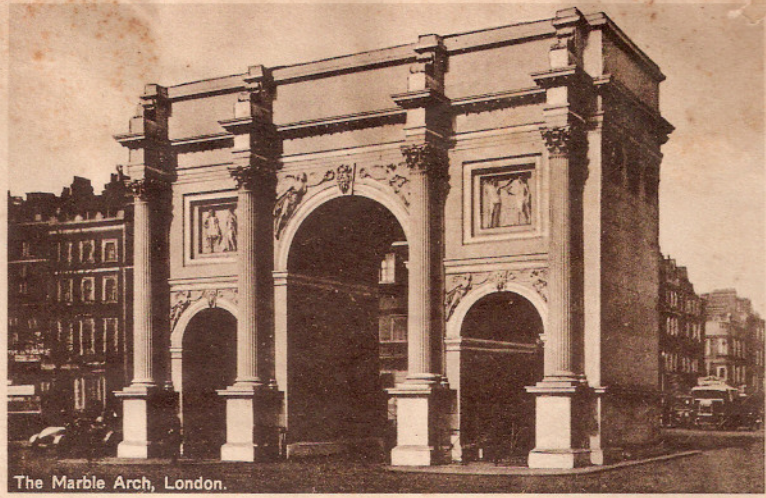
Kings & Queens from Edward the Confessor to George III and of many of England's greatest men. - The grave of the "Unknown Warrior" is also here. Cromwell was not crowned here.



British Museum, London.



Wellington Arch, Entrance to the Green Park, London.



The Marble Arch, London.



Queen Victoria Memorial, London.

*This memorial is just in front of Buckingham Palace.*



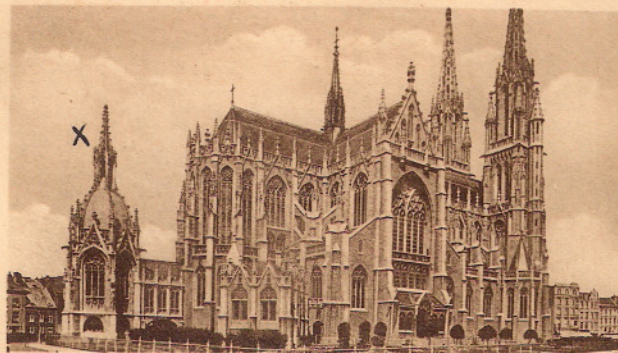
Peter Pan Statue, Kensington Gardens, London.



Nelson's Column and St. Martin's Church, London.

Ostend

Belgium



L'Eglise S S. Pierre et Paul vue de côté.

This church was almost ruined by the Germans. The X is where the crown is placed, was put there after their freedom was taken



Vue générale de la Digue vers l'estacade.



Les terrasses des grands Hôtels.



La plage et les bains.

ment bathing rare -



Le Kursaal et le Petit Nice.

Best Belgium

St. Bavon's Cathedral



Of all the churches of Belgium, St. Bavon's Cathedral stands out as the most important, containing as it does innumerable works of art. This famous picture,

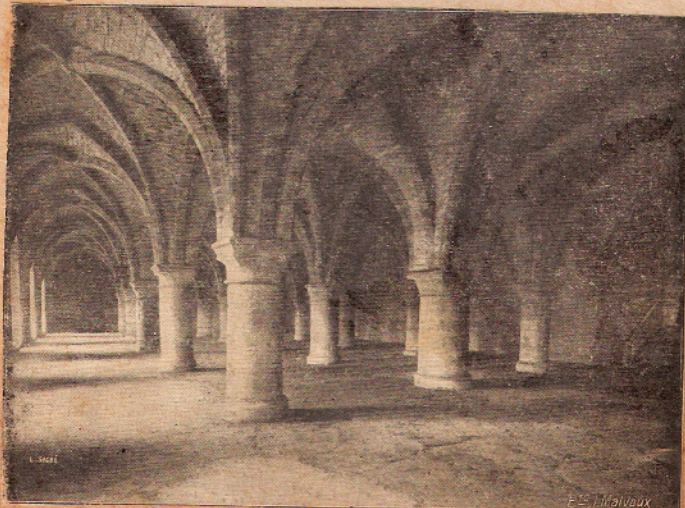
"The Adoration of the Mystic Lamb" by the brothers Van Eyck is an object of pilgrimage by every lover of art.



The carillon concerts (every Sat. night from June to Sept.) are a great attraction here. There are 52 bells up in the Belfry of the church.

Panorama, seen from the castle of the counts -

Hellog Carts a scene in Belgium



Crypts - Burial Places

Brussels



The Germans <sup>most</sup> occupied <sup>most</sup> of these buildings during the war.

~~General view~~

General view of the Market place



Church of St. Gudule



Palace of the King

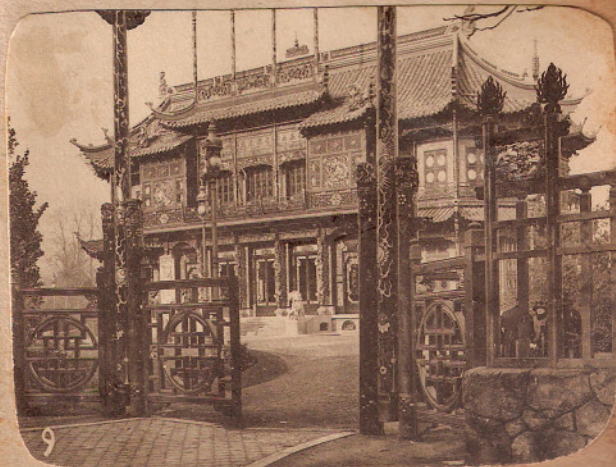
King Albert's palace -



Fifty Jubilee's Arcade



Monument of Leopold II



Chinese Museum

Beautiful Switzerland

Switzerland



Montreux

The Alps Mountains - The vineyards - terraced gardens - The Rhone River - Mount Blanc - Many tunnels - rivers - glaciers - waterfalls - Little Swiss houses - watch shops - Boat trip to Geneva - Grendenwald Glacier (how cold!!) Jungfrau, covered with snow, beautiful - Arrived at Interlachen the first of August which is the Swiss National Holiday (our Fourth of July) The maids at the hotel sang the national song - fireworks - sports -



The Chillon Castle and the Dents du Midi

Lord Byron's poem - "The Prisoner of Chillon"



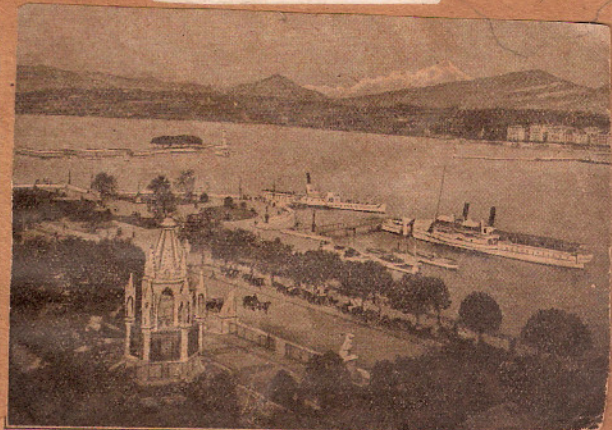
Swiss Alps



Lausanne and the Lake of Geneva



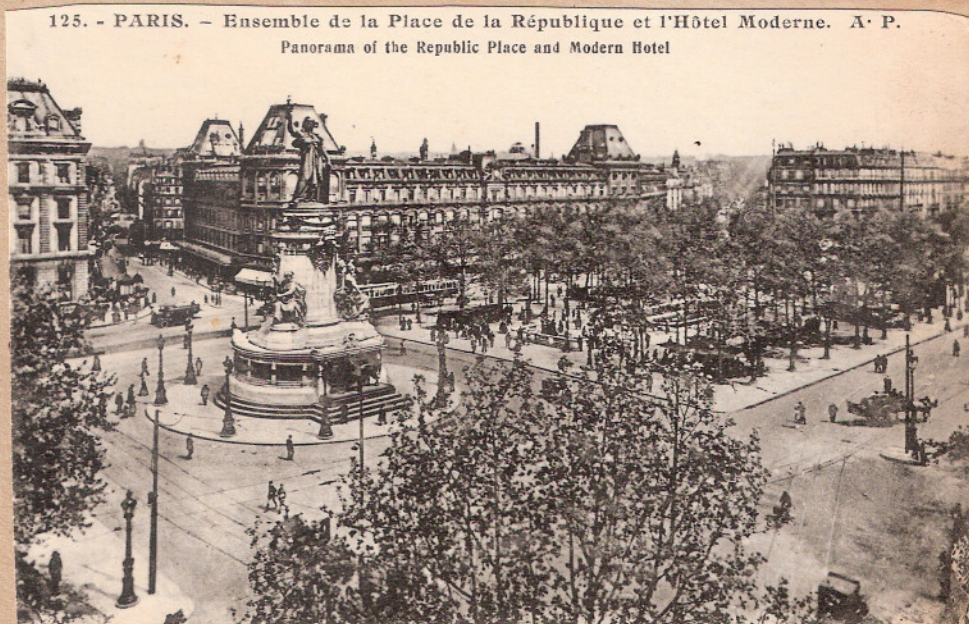
The snow-capped peaks of mighty Mont Blanc, which rises to the stupendous height of 15,782 feet, with Chamonix below.



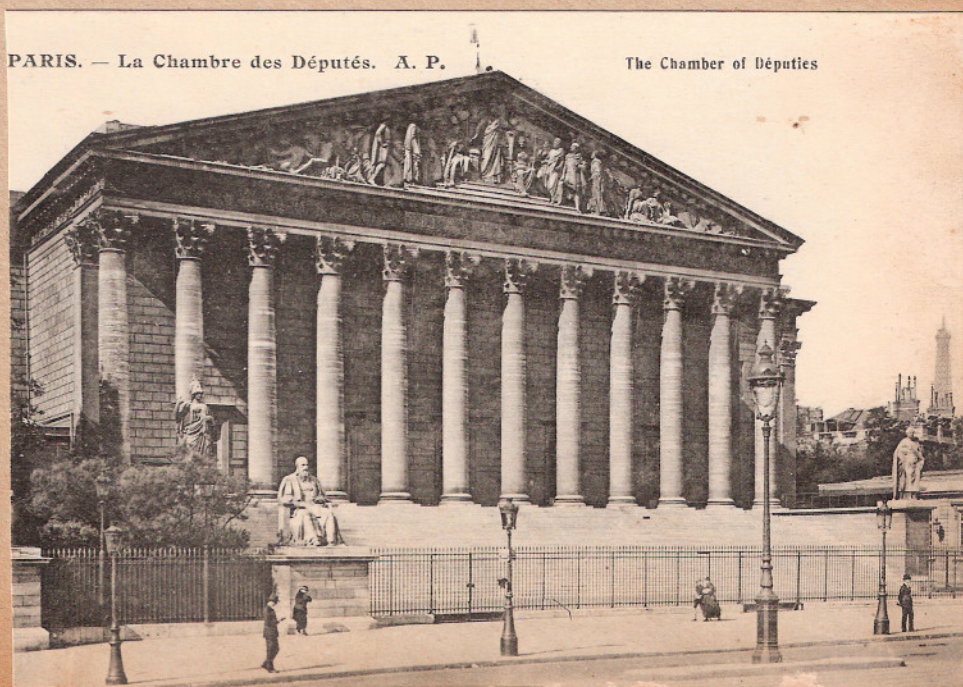
GENÈVE. Vue sur la rade et le Mont-Blanc.



30. - PARIS. - L'Avenue des Champs-Élysées et les Chevaux de Marly. A. P.  
Champs-Elysees Avenue and the Horses of Marly.

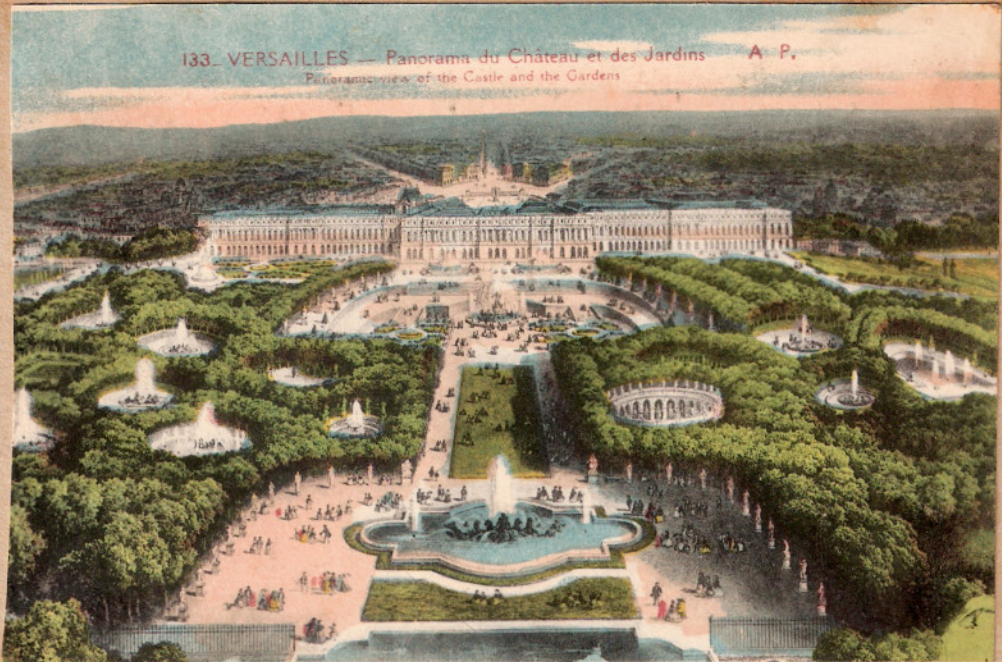


125. - PARIS. - Ensemble de la Place de la République et l'Hôtel Moderne. A. P.  
Panorama of the Republic Place and Modern Hotel



PARIS. - La Chambre des Députés. A. P.

The Chamber of Députés

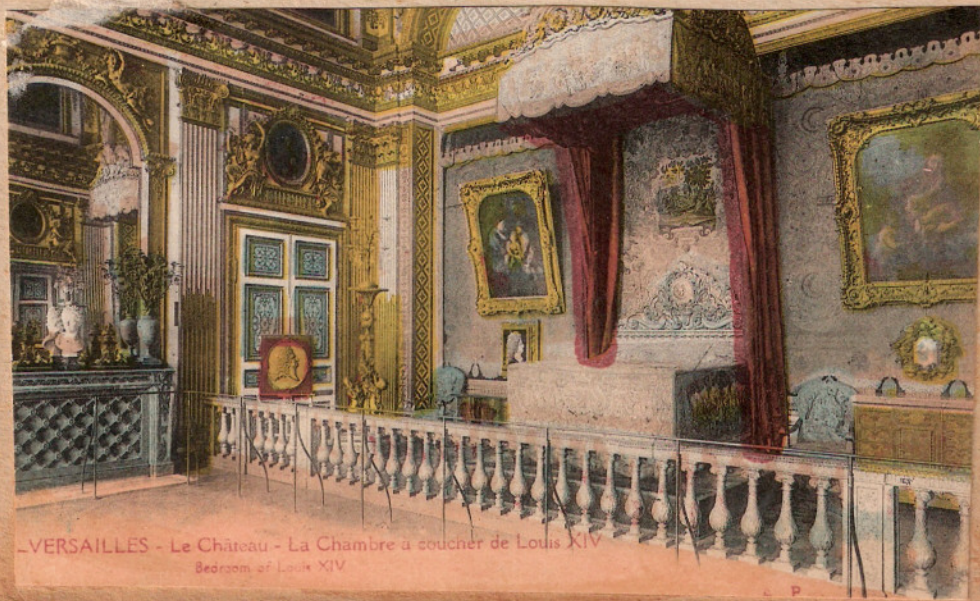


133. VERSAILLES — Panorama du Château et des Jardins A. P.  
 Panoramic view of the Castle and the Gardens



99. Palais de VERSAILLES — La Galerie des Glaces  
 173 m. de long sur 10 m. 50 de large) où le Roi de Prusse fut proclamé Empereur d'Allemagne le 18 Janvier 1871. Les Alliés y consentirent sa  
 déchéance par la signature du Traité de Paix le 28 Juin 1919. Looking Glass Gallery - (245 ft length 35 ft width) where was founded  
 the German Empire on the 18 th January 1871 - The Allies proclaim its fall by the signature of the Peace, on the 28 th June 1919. A. P.

The Hall  
 of Mirrors  
 where the  
 Treaty of  
 Peace was  
 signed -



VERSAILLES - Le Château - La Chambre à coucher de Louis XIV  
 Bedroom of Louis XIV

Louis XIV  
 bed room

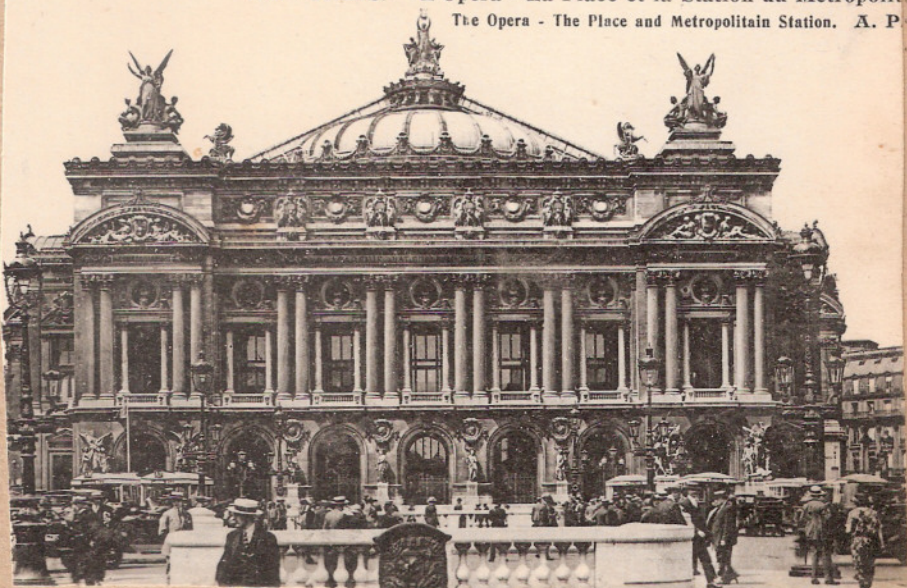


444. - PARIS. - L'Arc de Triomphe et la Tombe du Soldat Inconnu.  
The Arch of Triumph Tomb of the Unknown Soldier. A. P.



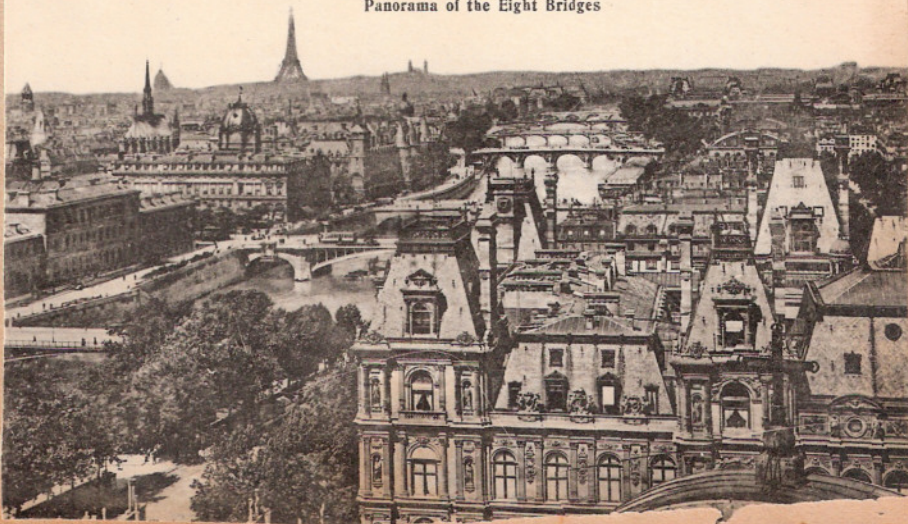
The Arc  
of Triumph  
and the  
Tomb of  
the unknown  
Soldier

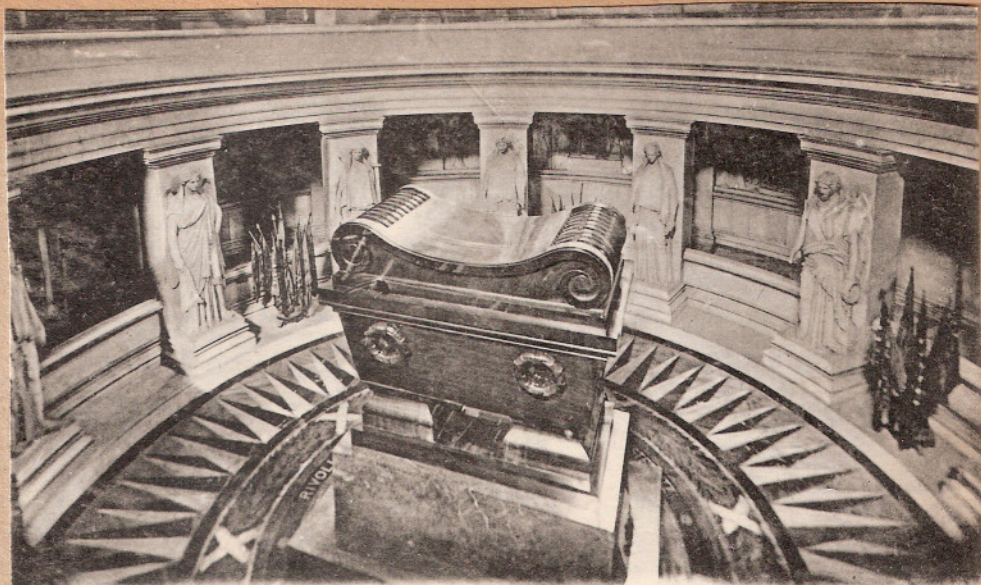
170. - PARIS. - L'Opéra - La Place et la Station du Métropolitain  
The Opera - The Place and Metropolitan Station. A. P.



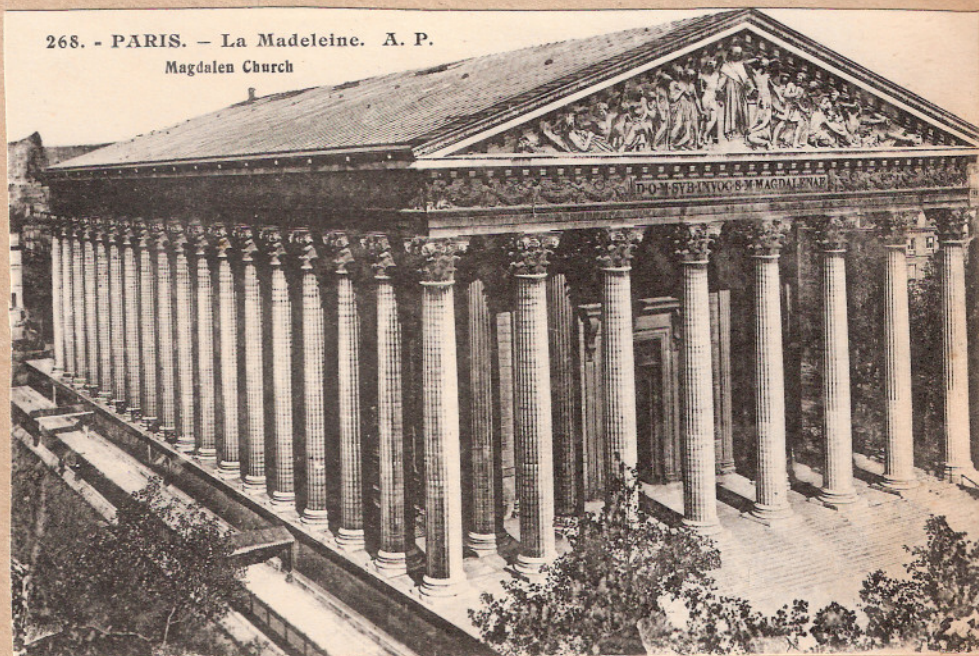
A beautiful  
Opera  
House -  
I  
saw  
I have  
been.

40. - PARIS. - Panorama des Huit Ponts. A. P.  
Panorama of the Eight Bridges





277. - PARIS. — Les Invalides - Le Tombeau de Napoléon I<sup>er</sup>. A. P.  
The Invalides Tomb of Napoleon I<sup>er</sup>



268. - PARIS. — La Madeleine. A. P.  
Magdalen Church



78. - PARIS. — Place de la Concorde  
Les Fontaines et l'Obélisque. A. P.  
Concord Place      The Fountains and the Obelisk

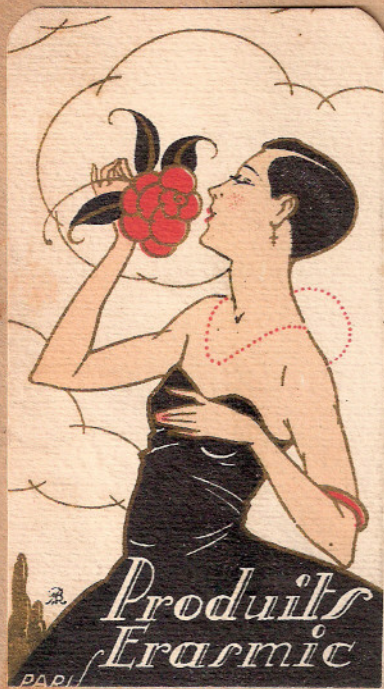
Milan Italy



Milan Cathedral - windows tell the whole story of the creation - The little tips at the top are life sized statues. Gothic style - entirely white - one of the largest churches in the world - begun 1386 - The interior has fifty-two pillars -

In Milan we also saw the picture of "The Last Supper" by de Vinci and The Crucifixion.

~~From~~ Artend Belgium where we  
bought our oil paintings from  
the little man who could not speak  
English - His daughter talked for  
him - Mrs. Pawell.



Bought  
a  
bottle  
of  
Perfume  
here



Society Theatre - London

GALE THEATRE  
17/7/29  
Pit Circle 3/-  
Tax 6d  
116  
TO BE RETAINED

Everybody dressed - Lapped up in style

Ye Oldest and most Historical "Chop House" in London



Ly 9977

4d

ASSOCIATED CO'S. & T.L.I. CO. 031

A	aton Vale	Westburne	15
B	East Acton	Royal Oak	15
C	Glendon	Washington	15
D	Old Oak Lane	Stn (B) 15	15
E	Dunsmuir	Chapel	15
F	North	Street	15
G	Manly	Mable	15
H	Wormwood	Stn (U) 15	15
I	Par. Hill	Broad	15
J	St. Mary's	Street	15
K	Cherry	Street	15
L	Cherry	Street	15
M	Cherry	Street	15
N	Cherry	Street	15
O	Cherry	Street	15
P	Cherry	Street	15
Q	Cherry	Street	15
R	Cherry	Street	15
S	Cherry	Street	15
T	Cherry	Street	15
U	Cherry	Street	15
V	Cherry	Street	15
W	Cherry	Street	15
X	Cherry	Street	15
Y	Cherry	Street	15
Z	Cherry	Street	15

No. Where Shakespeare was buried.  
THE COLLEGIATE CHURCH OF THE HOLY TRINITY,  
STRATFORD-UPON-AVON.

Bus ticket - London (the times we changed)

The old Cheshire Cheese  
Coffee house where Ben  
Jonson ate - very interesting  
just as it was many years  
ago.

The "Cheshire Cheese"  
Coffee house

Telephone: 130.  
Telegrams: 130 Rugby.

ASSOCIATION OF BRITISH HOTELS.



PROPRIETOR: WM FLINT.  
APPOINTED BY  
R.A.C., A.A. & M.U.  
ACCOMMODATION  
FOR CARS.

Grand Hotel,  
Rugby.

Breakfast here after a  
cold night's ride on  
the train

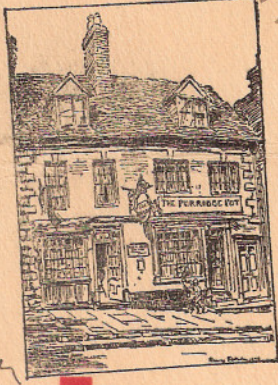
Saw his home but  
didn't see His Royal  
Highness -

# The Horridge Pot

(N. S. Borker)

Dunched  
here  
July 14th  
1929

survived  
the great fire  
of 1644



The  
Shakespearean  
Country

Its associations with the  
History and Romance of  
Warwick with illustrations  
by Hanslip Fletcher

East Gate  
**WARWICK**

Close to the Castle  
Telephone Warwick 241



H.R.H. THE PRINCE OF WALES

Telephone Number 20 Douglas.      Telegrams: "Dunneir, Glasgow."

**Caledonian  
Temperance  
:: Hotel ::**

Opposite  
Buchanan Street Station  
**GLASGOW.**



The good eats - eat cakes  
The good beds -  
Kitchen in front of  
house - The elite  
litter maids -  
The loud colored  
wall paper -



Clara J. Kader  
 Sheboygan, Wisconsin

To be used only for FIRST CLASS baggage which passengers wish to keep in their stateroom.

Nur für ERSTER KLASSE Gepäck zu verwenden, welches die Passagiere bei sich in ihrem Zimmer halten wollen.

Red Star Line

WANTED BAGGAGE



First Class

Passagier / Passenger / Passager / Dampfer / Steamer : *Ottie Lillian Kinningham*  
 Paquebot / Abfahrend / Sailing : *Montroyal*  
 Partant / Zimmer Nummer / Stateroom N° / Numéro de la Chambre : *August 17<sup>th</sup>*  
*302*

Ne doit être employé que pour les bagages de PREMIERE CLASSE que les propriétaires désirent garder auprès d'eux dans leur chambre.

Slechts te gebruiken voor EERSTE KLAS reisgoed welk de passagiers bij zich in hunne kamer willen houden.

**PEOPLE'S RAPID TRANSIT CO., INC.**  
**SEAT RESERVATION CHECK**  
 (NOT GOOD FOR TRANSPORTATION OR REFUND)  
**From ATLANTIC CITY to PHILADELPHIA**

Leaving Time 6:30 P.M. Section AUG 23

Name \_\_\_\_\_

FOR TELEPHONE RESERVATION  
 PRESENT TO THE OPERATOR WITH TICKET  
 WHEN ENTERING MOTORCOACH AND SUR-  
 RENDER AT DESTINATION SHOWN HEREON  
 (Good Only for Date Stamped on Back)

SEAT No.

7

*Wm. J. Kiningham*

*Miss Kiningham*

Dear Miss Kiningham:-

I was pleased to have the privilege of being with Tour # 2, on the steamer and of making your acquaintance. I sincerely hope that your experiences abroad were very pleasant. My last meeting with the party was in Paris on July 28, but reports from members indicate that the tour went well.

**THE PULLMAN COMPANY**  
**PART RAILROAD SURCHARGE**  
**PASSENGER'S CHECK**—The ticket of which this check is a part evidences payment of the charge made by the Pullman Company for the accommodation described, and in addition a part of the surcharge ordinarily required to be collected for and accrue to the Railroad Company, in connection with the use of accommodations shown on the ticket.

**MONTREAL, P. Q.**

To New York

Accommodations 1st Car 725

Line No. 100-5-PS R.R.

Property taken into car will be entirely at owner's risk.

Office **49-3-10**  
 Form **100-5-PS**  
 1023  
 Passengers **1 2 3**



Shall we  
 ever forget  
 the night at  
 the Folies  
 Bergère !!  
 Very pretty  
 but rather  
 shocking



792458

1	JANUARY	17
	JANVIER	
2	FEBRUARY	18
	FEVRIER	
3	MARCH	19
	MARS	
4	APRIL	20
	AVRIL	
5	MAY	21
	MAI	
6	JUNE	22
	JUIN	
7	JULY	23
	JUILLET	
8	AUGUST	25
	AUT	
9	SEPT.	26
	OCTOBER	27
	OCTOBRE	
10	NOV.	28
	DEC.	29
11	Series 1	30
12	(SEE OVER)	31
13	(VOIR AU VERSO)	

1 2 3 4 5 6 7 8 9 10 11 12 13 14 15 16

A jeter dans la boîte à la sortie

**40**  
Centimes  
de 2<sup>me</sup>  
en

CHEMIN DE FER ÉLECTRIQUE SOUTERRAIN  
**NORD-SUD de PARIS**  
 Bulletin de Perception supplémentaire

A présenter à toute réquisition

17 18 19 20 21 22 23 24 25 26 27 28 29 30 31

H 0 4 1 4 7 7

The rides on the subway in  
 Paris - I, II, III classes. Remember  
 the powder that made us sneeze

Miss MC MAHAN Baggage No 50 Room No  
 Miss KIN INGHAM Baggage No 51 **44**

When we reached our  
 hotel, a slip like this  
 was given us so we  
 could find our  
 room mate & go to our  
 rooms.

**NORD-SUD**  
 206 29 07

STE VERSAILLES  
 1 0 1  
 CABLE LE JOUR  
 DE L'ÉMISSION

ALLER & RETOUR  
 2<sup>me</sup> Classe

10327

Zeebrugge Museum.  
 Zeebrugge

**3.00**

Taxes comprises  
 A présenter à toute demande  
 Non valable sans souche  
 Tickets MEDICE Bruxelles

OT 146

Visited this on our way to  
 Holland - It is built like  
 a submarine - Remember  
 the Beach of Death -  
 The Germans used this.